

Roche CustomBiotech Product Catalog Raw Materials for Clinical Chemistry and Immunology

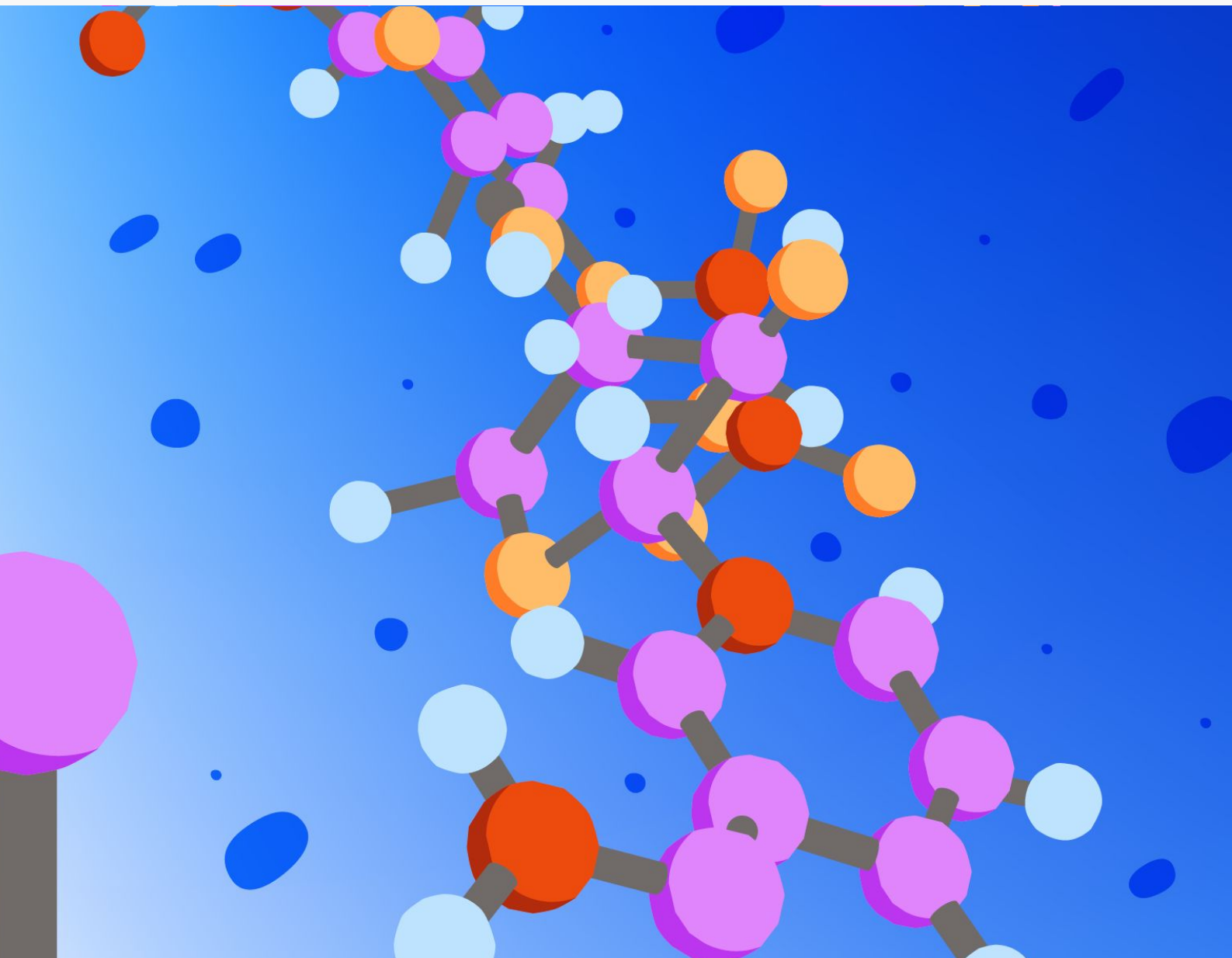


Table of Contents



Introducing Roche CustomBiotech

Portfolio Overview

- Clinical Chemistry Raw Materials
- Immunology Raw Materials

Clinical Chemistry

- Buffers
- Detergents
- Protease Inhibitors
- Cofactors/Nucleotides
- Enzymes
- Substrates

Immunology

- Antibodies
- Streptavidin/Biotin
- Marker Enzymes
- Marker Substrates
- Antibody Interference Blocker
- Antibody Interference Control
- Surface Interference Blocker
- Detection Interference Blocker

Roche CustomBiotech - We supply your next step

As partner and supplier for healthcare companies and manufacturers, we streamline your operations, power your growth, and help you to deliver better healthcare products.

Roche CustomBiotech has been a leader in supplying innovative, premium products to forward-thinking biopharma and diagnostics businesses for more than 50 years. As part of Roche, we work with pioneering biopharma and diagnostic experts at one of Europe's largest and most productive biotechnology centers.

This is where Roche continually creates a wide range of drugs and diagnostics, including critical raw materials, components, quality control kits, and bioprocess analyzers.

Reliable access to these materials supports our customers in developing and manufacturing valuable new products and services, such as state-of-the-art mRNA-based vaccines, diagnostics tests or molecular point of care (POC) kits.



Certified quality management system

Build quality & compliance into your assay. Use reagents manufactured under a certified **ISO 13485:2016** quality management system.

Regulatory disclaimers are listed on the respective product page on custombiotech.roche.com



Clinical Chemistry Raw Materials

Raw materials from Roche CustomBiotech transform your diagnostic application into the quality product you wish to bring to market. Find the right materials in our extensive portfolio of assay components for a range of well-established tests, including:



Heart

Creatine Kinase
Creatine Kinase-MB
Lactate Dehydrogenase



Pancreas

α -Amylase
Pancreatic- α -Amylase
Lipase



Kidney

Uric Acid
Urea
Creatinine



Metabolism

Cholesterin (Cholesterol)
Triglycerides
Glucose



Liver

Aspartate Aminotransferase
Alanine Aminotransferase
 γ -Glutamyltransferase
Glutamate Dehydrogenase

Highlights of this offering include industry-standard enzymes and proven components designed to deliver high accuracy and sensitivity for your tests.

Benefiting from decades of experience in diagnostics, all of our assay components are made to meet strict quality standards. Our modern manufacturing sites ensure a steady global supply and excellent consistency from lot to lot.

This reliable quality means you get highly reproducible assay results. It also ensures a smooth, easy integration of raw materials into your production workflows at any scale.

Discover products for your clinical chemistry assay development and production from your raw materials partner



Buffers

Detergents

Enzymes

Protease Inhibitors

Substrates

Cofactors

Immunology Raw Materials



Selected portfolio highlights:

Optimal blocking solutions for reliable immunoassays



Recombinant streptavidin that sets industry standards



Advanced technology with recombinant alkaline phosphatase

CustomBiotech is your dedicated partner for diagnostic innovation, providing a comprehensive portfolio of high-performance immunoassay components designed for maximum specificity, accuracy, and lot-to-lot consistency.

Access a specialized portfolio of rigorously tested premium raw materials - from proven antibody pairings to highly active marker enzymes and recombinant streptavidin.

Engineered with decades of IVD expertise, our cutting-edge, assay-flexible interference blockers deliver robust, highly reliable performance and development flexibility during commercialization.

Discover products for your immunoassay development and production from your raw materials partner



Antibodies

Immunoassay Interference Blockers

Streptavidin/Biotin

Marker Substrates

Marker Enzymes

Clinical Chemistry Raw Materials

Buffers

| Product Name | Catalog Number | Product Information | Pack Size |
|-------------------------------|----------------|---------------------|-------------|
| Glycylglycine | 10002887103 | crystalline powder | custom fill |
| Hepes | 10172944103 | crystalline powder | custom fill |
| Tris | 10153265103 | crystallizate | custom fill |

Detergents

| Product Name | Catalog Number | Product Information | Pack Size |
|--------------------------------------|----------------|--|-------------|
| Dilaurylglycosulfate | 11827294103 | powder | custom fill |
| CHAPS | 10810681103 | zwitterionic detergent, crystalline powder | custom fill |
| CHAPSO | 11112392103 | zwitterionic detergent, crystalline powder | custom fill |
| Deoxycholate | 11434314103 | ionic detergent, sodium salt | custom fill |
| Polidocanol (Thesit) | 10831620103 | non-ionic detergent | custom fill |
| Taurodesoxycholol | 11332686103 | sodium salt | custom fill |

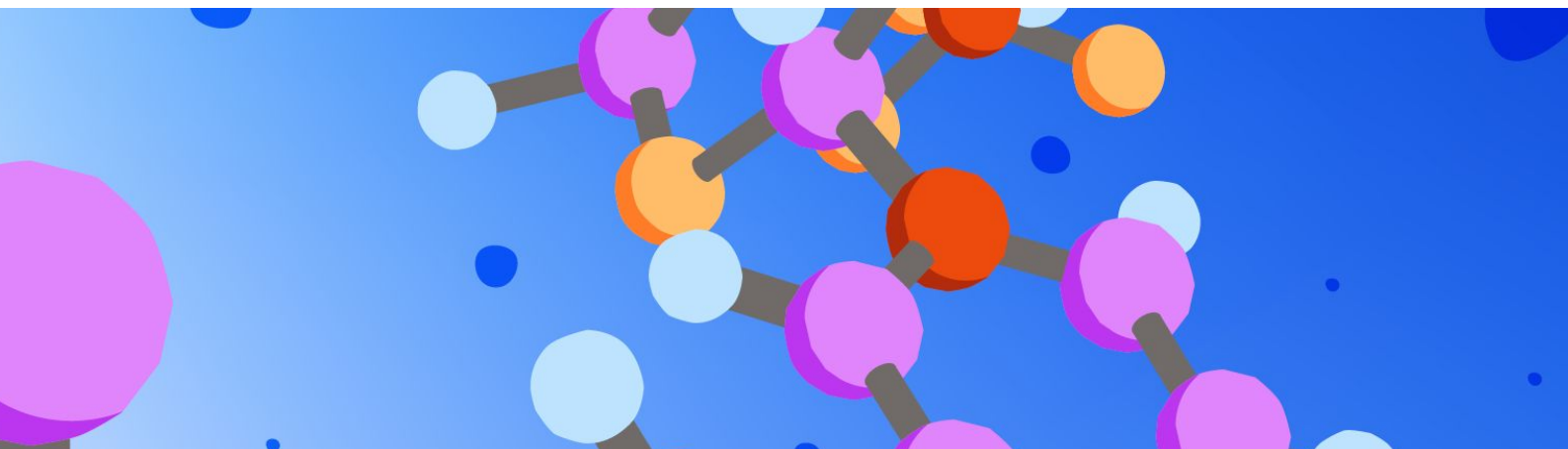
Protease Inhibitors

| Product Name | Catalog Number | Product Information | Pack Size |
|--|----------------|---|----------------------------|
| Aprotinin | 10236632103 | from bovine lung, lyophilizate | custom fill |
| cOmplete protease inhibitor cocktail tablets | 04574834001 | EDTA-free | 7500 tablets in glass vial |
| Leupeptin | 10528595103 | Ac-Leu-Leu-argininal x ½ H2SO4, synthetic | custom fill |



Discover more about clinical chemistry raw materials

Regulatory disclaimers are listed on the respective product page on custombiotech.roche.com



Clinical Chemistry Raw Materials

Cofactors/Nucleotides

| Product Name | Catalog Number | Product Information | Pack Size |
|-------------------------------------|----------------|---------------------|----------------------|
| Acetyl-Coenzyme A | 10150932103 | trilithium salt | custom fill |
| Coenzyme A, Grade I | 10151009103 | free acid | custom fill |
| Coenzyme A, Grade I | 10121541103 | trilithium salt | custom fill |
| FAD | 10154032103 | disodium salt | custom fill |
| NAD, Grade II | 10004626103 | free acid | custom fill |
| NADH, Grade II | 10004642103 | disodium salt | 250 g or custom fill |
| NADP | 10004669103 | disodium salt | custom fill |
| NADP | 10233536103 | monopotassium salt | custom fill |
| NADPH | 10041939103 | tetrasodium salt | custom fill |
| ATP, Grade I | 10422495103 | disodium salt | custom fill |

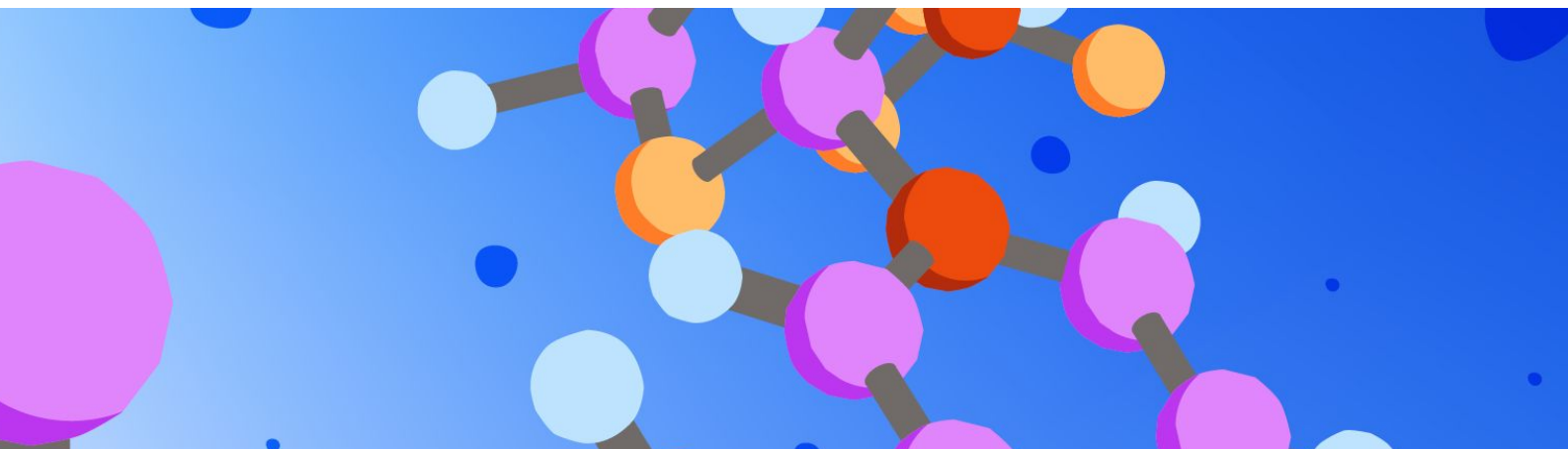
Enzymes

| Product Name | Catalog Number | Product Information | Pack Size |
|--|----------------|--|-------------|
| Acyl-CoA Synthetase | 10885568103 | from microorganism, lyophilizate | custom fill |
| Acyl-CoA Oxidase | 10885550103 | from microorganisms, lyophilizate | custom fill |
| Alcohol Dehydrogenase | 11452541103 | from yeast, lyophilizate | custom fill |
| Aldehyde Dehydrogenase | 10145947103 | from yeast, lyophilizate | custom fill |
| Ascorbate Oxidase | 10199605103 | from <i>Cucurbita</i> species, lyophilizate | custom fill |
| Ascorbate Oxidase | 11136364103 | from <i>Cucurbita</i> species, poor of AST/ALT, lyophilizate | custom fill |



Discover more about clinical chemistry raw materials

Regulatory disclaimers are listed on the respective product page on custombiotech.roche.com



Clinical Chemistry Raw Materials

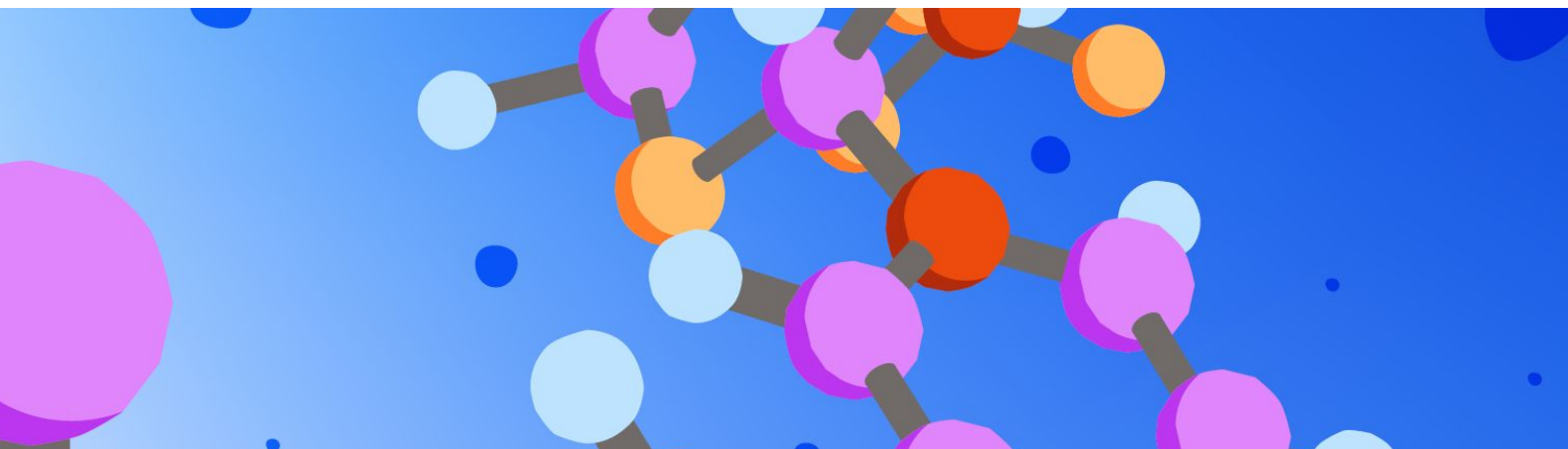
Enzymes

| Product Name | Catalog Number | Product Information | Pack Size |
|--|----------------|--|-------------|
| Cholesterol Esterase, Grade I | 11520857103 | from <i>Pseudomonas</i> species, lyophilizate | custom fill |
| Cholesterol Esterase, chemically modified | 11641735103 | from <i>Pseudomonas</i> species, lyophilizate | custom fill |
| Cholesterol Esterase, Grade II | 11015923103 | from <i>Pseudomonas</i> species, lyophilizate | custom fill |
| Cholesterol Esterase | 10129046103 | from <i>Candida cylindracea</i> , lyophilizate | custom fill |
| Cholesterol Esterase | 10262609103 | from <i>Candida cylindracea</i> , solution | custom fill |
| Creatinase | 11799142103 | from microorganism, lyophilizate | custom fill |
| Creatininase | 11865471103 | from <i>Pseudomonas</i> species, expressed in <i>E.coli</i> , lyophilizate | custom fill |
| Galactose 1-Dehydrogenase | 10633313103 | from <i>E.coli</i> overproducer, suspension | custom fill |
| Galactose 1-Dehydrogenase | 10150959103 | from <i>Pseudomonas fluorescens</i> , suspension | custom fill |
| Glucose Oxidase (GOD), Grade I | 12158566103 | from <i>Aspergillus niger</i> overproducer, lyophilizate | custom fill |
| Glucose Oxidase (GOD), Grade II | 11939998103 | from <i>Aspergillus niger</i> overproducer, lyophilizate | custom fill |
| Glucose-6-phosphate Dehydrogenase (G6P-DH) | 11293206103 | from <i>Leuconostoc mesenteroides</i> , lyophilizate | custom fill |
| α -Glucosidase | 11626329103 | from yeast overproducer, multifunctional, lyophilizate | custom fill |
| β -Glucuronidase | 3708446103 | from <i>E.coli</i> , solution | custom fill |



Discover more about clinical chemistry raw materials

Regulatory disclaimers are listed on the respective product page on custombiotech.roche.com



Clinical Chemistry Raw Materials

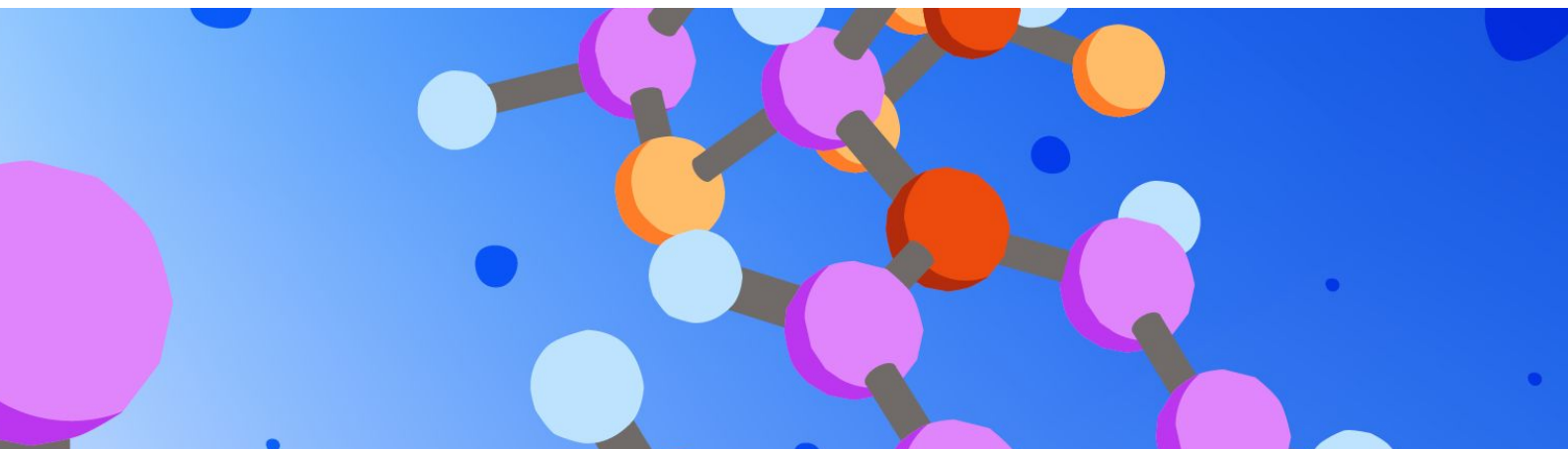
Enzymes

| Product Name | Catalog Number | Product Information | Pack Size |
|---|----------------|--|--------------|
| Glycerol Kinase (GK) | 11499530103 | from <i>Bacillus stearothermophilus</i> , lyophilizate | custom fill |
| Glycerol Kinase (GK), concentrated | 10539937103 | from <i>Bacillus stearothermophilus</i> , sol. | custom fill |
| Glycerol-3-phosphate Oxidase, chemically modified | 11582003103 | from <i>E.coli</i> overproducer, lyophilizate | custom fill |
| Hexokinase (HK) | 11119796103 | from yeast overproducer, lyophilizate | custom fill |
| Hexokinase (HK) | 11149130103 | from yeast overproducer, solution | custom fill |
| Lactate 2-Monooxygenase Grade I | 4822277103 | from <i>Aerococcus viridans</i> , lyophilizate | custom fill |
| Lactate 2-Monooxygenase Grade II | 11798197103 | from <i>Aerococcus viridans</i> , lyophilizate | custom fill |
| Lipoprotein Lipase | 10734284103 | from <i>Pseudomonas</i> species, lyophilizate | custom fill |
| Lipoprotein Lipase (Modified) | 11145991103 | from <i>Pseudomonas</i> species, lyophilizate | custom fill |
| Nitrate Reductase | 10918202103 | from <i>Aspergillus</i> species, lyophilizate | custom fill |
| Oxalate Oxidase | 10062410103 | boric acid free, from barley seedlings, lyophilizate | custom fill |
| Peroxidase (POD), Grade II | 11378783103 | from horseradish, lyophilizate | custom fill |
| | 11378783101 | | 1 MU package |
| Sarcosine Oxidase | 11378856103 | from <i>E.coli</i> overproducer, lyophilizate | custom fill |
| Urease | 11759132103 | from jack bean, lyophilizate | custom fill |



Discover more about clinical chemistry raw materials

Regulatory disclaimers are listed on the respective product page on custombiotech.roche.com



Clinical Chemistry Raw Materials

Substrates

| Product Name | Catalog Number | Product Information | Pack Size |
|--|----------------|---|-------------|
| 4-Nitrophenyl Phosphate (4-NPP) | 10270857103 | di-Tris salt | custom fill |
| Chromogenic Substrate for Lipase | 11034618103 | 1,2-O-Dilauryl-rac-glycero-3-glutaricacid-(6'-methylresorufin)ester | custom fill |
| Ethylidene-4-NP-G7 | 10880078103 | Ethyliden-4-nitrophenyl- α -D-maltoheptaosid (EPS), powder | custom fill |
| Glupa-carboxylate | 10413151103 | monoammonium salt | custom fill |
| TOOS (N-Ethyl-N-(2-hydroxy-3-sulfopropyl)-m-toluidine) | 11650670103 | monosodium salt, dihydrate | custom fill |
| Tribromo-hydroxybenzoic acid | 10755745103 | crystallizate | custom fill |
| L(+)-Alanine | 10136921103 | crystalline powder | custom fill |
| α -Ketoglutarate (2 Oxoglutarate) | 10156736103 | free acid | custom fill |
| α -Ketoglutarate (2 Oxoglutarate) | 10040584103 | disodium salt, dihydrate | custom fill |
| Creatine Phosphate | 10003506103 | disodium salt | custom fill |
| Di(adenosine-5'-)penta-phosphate | 10161624103 | trilithium salt | custom fill |
| Glucose-6-phosphate | 10153079103 | disodium salt | custom fill |
| N-Acetyl-L-Cysteine | 10068365103 | crystallizate | custom fill |
| | 10068365101 | | 1 kg |
| Phosphoenolpyruvate (PEP) | 10005185103 | tri(cyclohexylammonium) salt | custom fill |
| Phosphoenolpyruvate (PEP) | 10152960103 | monosodium salt | custom fill |

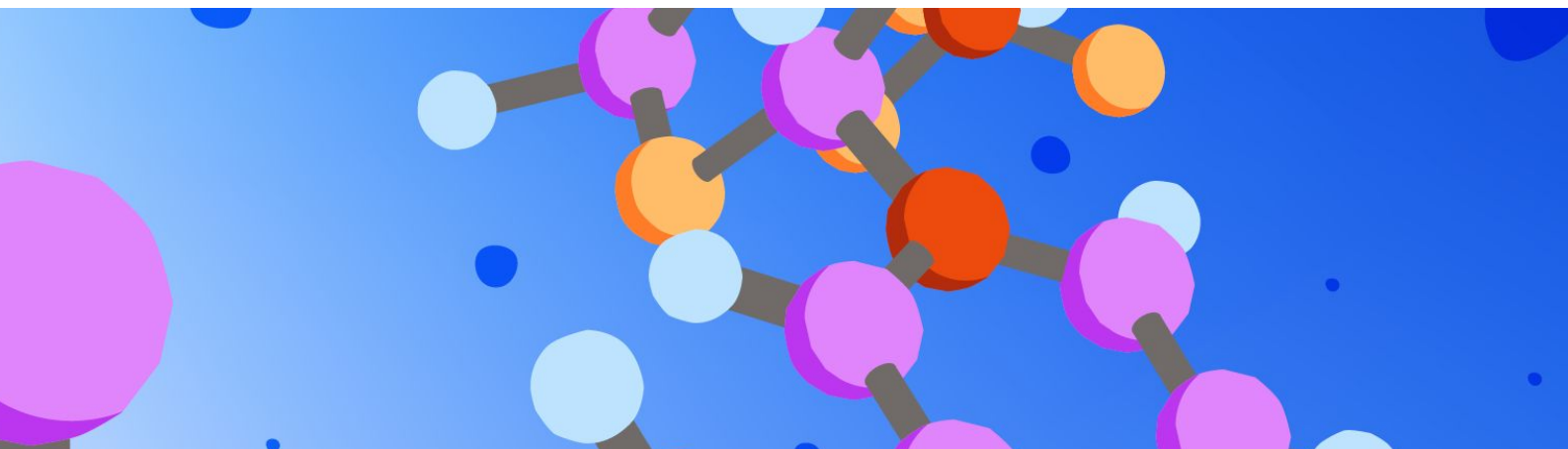
Additional Biochemicals

| Product Name | Catalog Number | Product Information | Pack Size |
|--|----------------|---------------------|-------------|
| 3-Hydroxy-1,2,3,4-tetrahydrobenzo[h] quinoline | 10003174103 | crystalline powder | custom fill |



Discover more about clinical chemistry raw materials

Regulatory disclaimers are listed on the respective product page on custombiotech.roche.com



Immunology Raw Materials

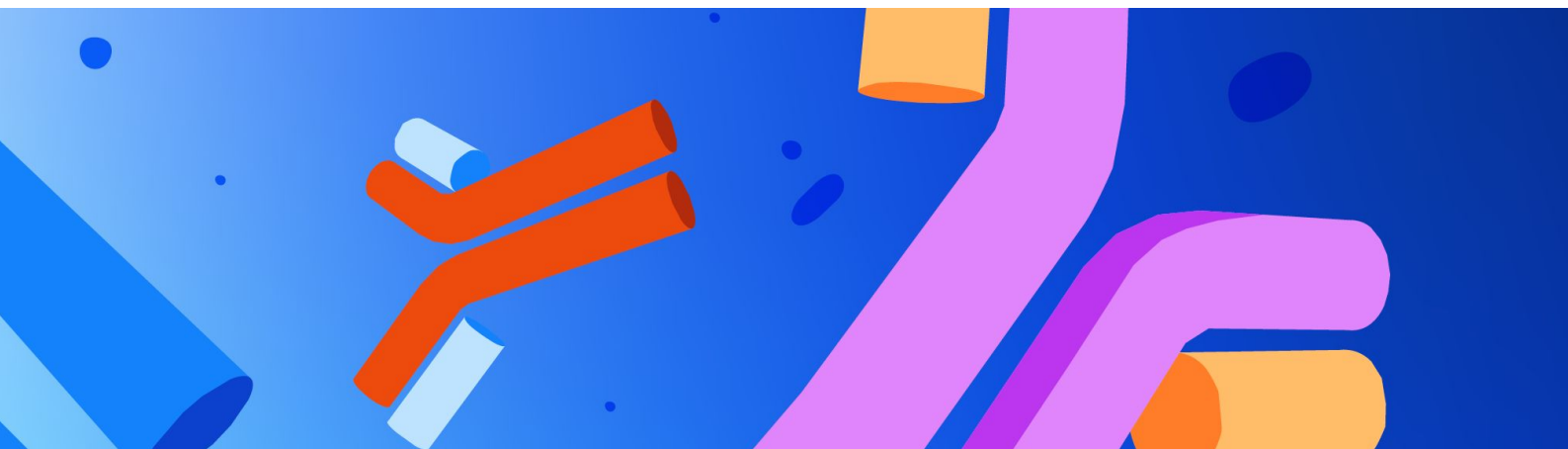
Monoclonal Antibodies

| Product Name | Catalog Number | Product Information | Pack Size |
|--------------------------|----------------|---------------------|-------------------------------------|
| MAB<CK-MB> M-7.4.5 IgG | 11719815103 | lyophilizate | custom fill |
| MAB<CK-MB> M-6.12.47 IgG | 11719823103 | lyophilizate | custom fill |
| MAB<CK-MM>Mix | 04688457103 | frozen solution | 1 mL, 10 mL, 50 mL, 100 mL, 1000 mL |
| MAB<AFP>M-LJ738 IgG | 11492101103 | lyophilizate | custom fill |
| MAB<AFP>M-TU11 IgG | 11492080103 | lyophilizate | custom fill |
| MAB<CEA>M-TU2 IgG | 11353713103 | lyophilizate | 100 mg |
| MAB<CEA>M-TU3 IgG | 10777498103 | lyophilizate | custom fill |
| MAB<DD>M-1.2.57 IgG | 12156903103 | lyophilizate | custom fill |
| MAB<DD>M-2.1.16 IgG | 12045206103 | lyophilizate | custom fill |
| MAB<Ferr>M-3.170 IgG | 11547089103 | lyophilizate | custom fill |
| MAB<Ferr>M-4.184 IgG | 11547119103 | lyophilizate | custom fill |
| MAB<FSH>M-1.303 IgG | 11493540103 | lyophilizate | custom fill |
| MAB<FSH>M-W3g IgG | 11493531103 | lyophilizate | custom fill |
| MAB<H-S-Amy>M-Tu66C7 | 11543601103 | lyophilizate | custom fill |
| MAB<H-S-Amy>M-Tu88E8IgG | 11543598103 | lyophilizate | custom fill |
| MAB<IGE>M-323 IgG | 11543393103 | lyophilizate | custom fill |
| MAB<IGE>M-7H8 IgG | 11988204103 | lyophilizate | custom fill |
| MBK<INSULIN>M-BM1 IgG | 12208725103 | lyophilizate | custom fill |
| MAB<INSULIN>M-ST3 IgG | 12208750103 | lyophilizate | custom fill |
| MAB<LH>M-11412 IgG | 11547925103 | lyophilizate | custom fill |
| MAB<LH>M-2.406 IgG | 11547038103 | lyophilizate | custom fill |
| MAB<TSH>M-A8 IgG | 11367978103 | lyophilizate | custom fill |
| MAB<TSH>M-TU1.20 IgG | 10767778103 | lyophilizate | custom fill |
| MAB<Dig>M-19-11 IgG | 05910714103 | powder | 5 mg |
| MAB<Keratin>-AE3 IgG | 03808513103 | frozen solution | 1 mg, 10 mg, 100 mg |
| MAB<Keratin>M-AE1 IgG | 03808521103 | frozen solution | 1 mg, 10 mg, 100 mg |



Discover more about immunology raw materials

Regulatory disclaimers are listed on the respective product page on custombiotech.roche.com



Immunology Raw Materials

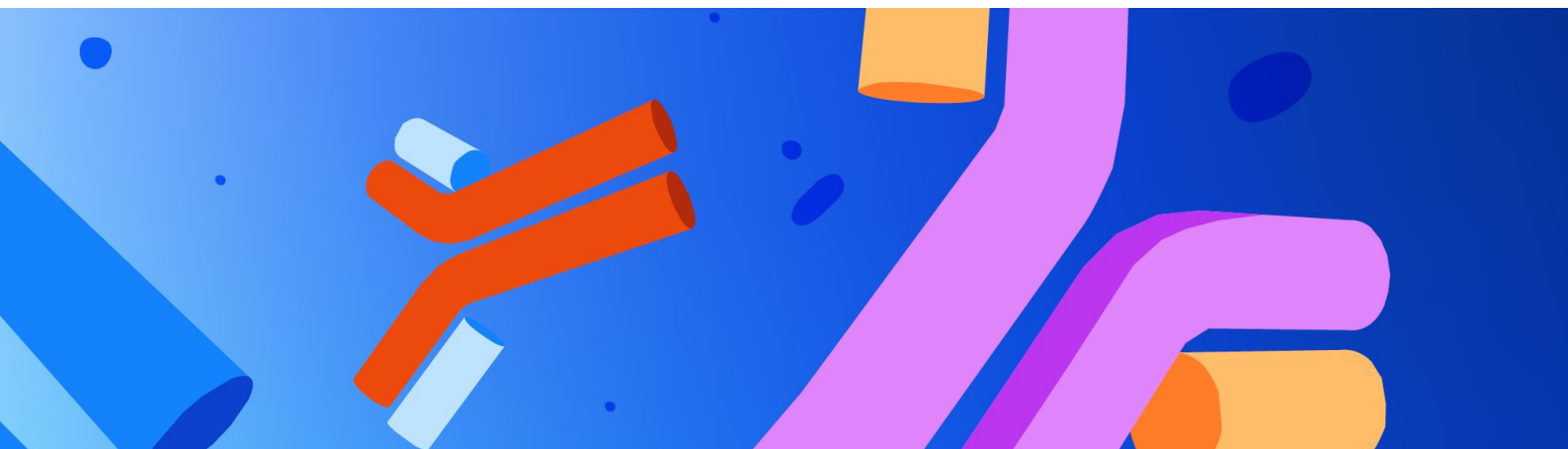
Streptavidin/Biotin

| Product Name | Catalog Number | Product Information | Pack Size |
|-------------------------------------|----------------|--|---------------------------|
| D-Biotin-N-hydroxysuccinimide ester | 10734250103 | crystalline powder | custom fill |
| Streptavidin POD | 11096346103 | frozen solution | custom fill |
| Streptavidin, recombinant | 08903727103 | from <i>Streptomyces avidinii</i> , expressed in <i>E. coli</i> , liquid | 0.5 GAI, 5 GAI |
| Streptavidin rec. inactive, Poly | 11922122103 | frozen solution | 0.25 GAI, 2.5 GAI, 16 GAI |
| SA coated MTP Nunc F8 | 11940279103 | streptavidin-coated microplate | custom package |



Discover more about immunology raw materials

Regulatory disclaimers are listed on the respective product page on custombiotech.roche.com



Immunology Raw Materials

Marker Enzymes

| Product Name | Catalog Number | Product Information | Pack Size |
|---|----------------|---|-------------|
| Alkaline Phosphatase, EIA Grade | 10556602103 | from calf intestine, solution | custom fill |
| Alkaline Phosphatase, rec., highly active | 03137031103 | from calf intestine, expressed in <i>Pichia pastoris</i> , solution | custom fill |
| Alkaline Phosphatase, rec., highly active, carbohydrate reduced | 03535452103 | from calf intestine, expressed in <i>Pichia pastoris</i> , solution | custom fill |
| Alkaline Phosphatase Mutein, rec. | 04781007103 | from calf intestine, expressed in <i>Pichia pastoris</i> , lyophilizate | custom fill |
| Peroxidase (POD), Grade I | 10121606103 | from horseradish, lyophilizate | custom fill |
| Poly Peroxidase (Poly POD), EIA Grade | 11578545103 | from horseradish, lyophilizate | custom fill |
| β -Galactosidase Mutein | 11184024103 | from <i>E. coli</i> overproducer, lyophilizate | custom fill |

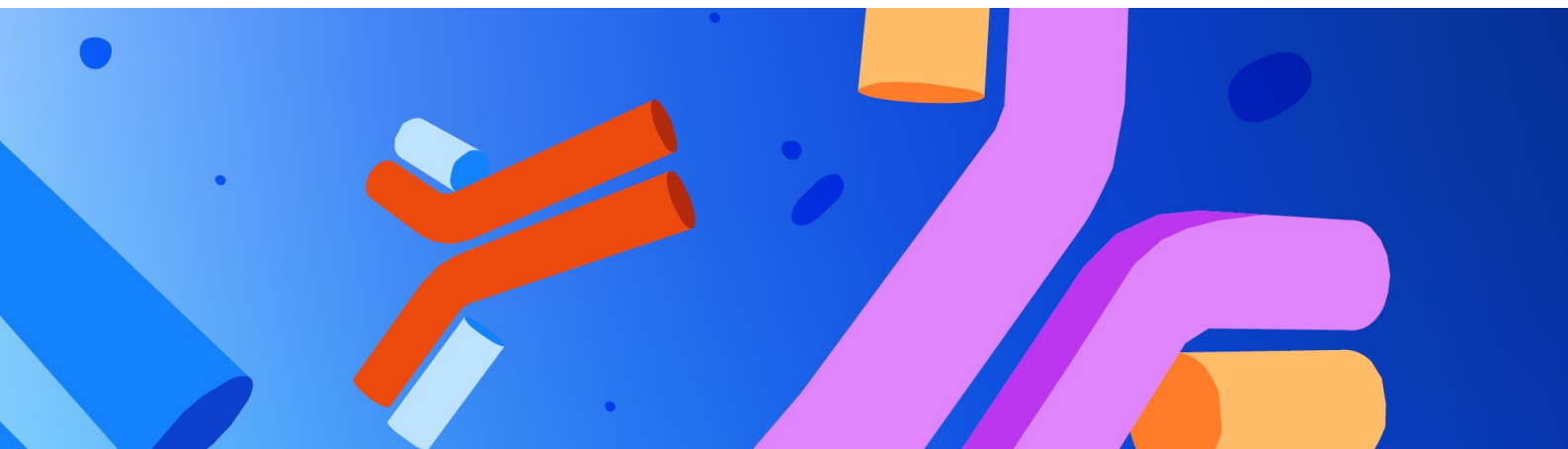
Marker Substrates

| Product Name | Catalog Number | Product Information | Pack Size |
|---|----------------------------|-----------------------------------|-------------------------------|
| Chlorophenolred-beta-D-galactopyranoside (CPRG) high pure | 07930097103 | sodium salt, powder | custom fill |
| 4-Nitrophenyl Phosphate (pNPP) | 10004847101 10004847103 | disodium salt, crystalline powder | 0.5 kg package custom fill |
| 5-Bromo-4-chloro-3-indolyl-phosphate (BCIP) | 10760978103 | toluidin, crystalline powder | custom fill |



Discover more about immunology raw materials

Regulatory disclaimers are listed on the respective product page on custombiotech.roche.com



Immunoassay Interference Blocker

Antibody Interference Blocker

| Product Name | Catalog Number | Product Information | Pack Size |
|------------------------------|----------------|---------------------|---|
| Framework IgG | 3369846103 | lyophilizate | custom fill |
| MAB IgG2b/Fab2a Poly | 11355830103 | lyophilizate | custom fill |
| MAB IgG(2a)/Fab(2a) Poly | 11522558103 | lyophilizate | custom fill |
| MAB33 IgG1 | 11200941103 | lyophilizate | custom fill |
| MAB33 IgG1/IgG1 Poly | 11939661103 | frozen solution | 0.2 GAI (samples only), 1 GAI, 5 GAI, 50 GAI |
| MAB33 IgG1/Fab1 Poly | 09458816103 | lyophilizate | 2 GAI |
| PAB Bovine IgG (PAB<->R-IgG) | 09458808103 | lyophilizate | 0.25 GAI |
| | 11108751103 | lyophilizate | custom fill |

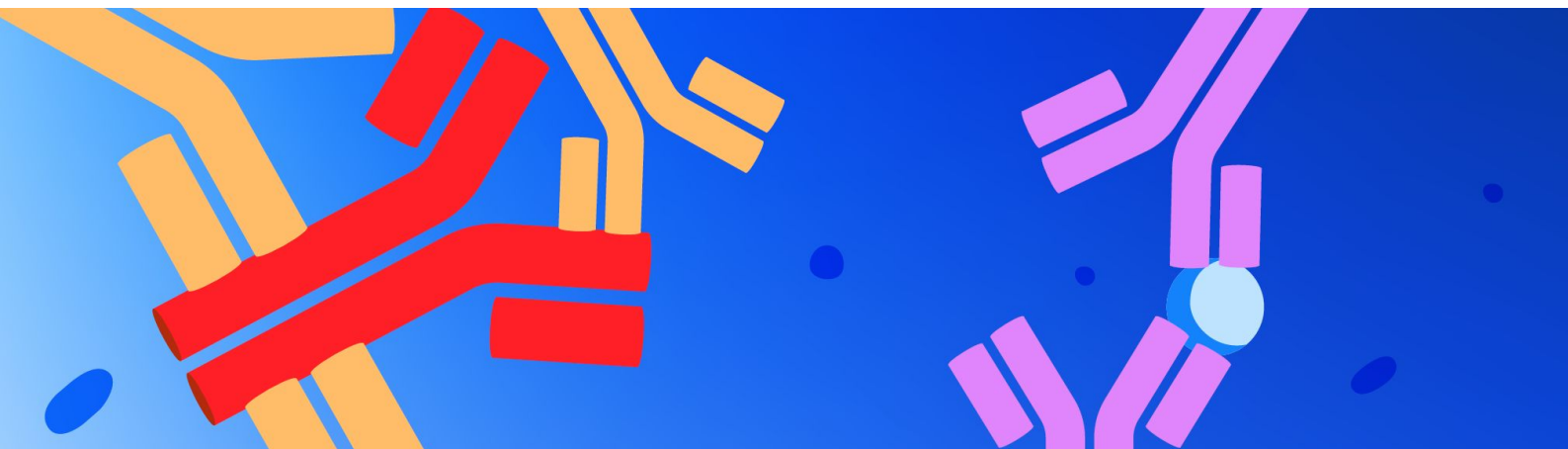
Antibody Interference Control

| Product Name | Catalog Number | Product Information | Pack Size |
|---------------------|----------------|---------------------|-----------|
| HAMA Serum, Type I | 11767275103 | lyophilizate | 1 vial |
| HAMA Serum, Type II | 05167060103 | lyophilizate | 1 vial |



Discover more about immunology raw materials

Regulatory disclaimers are listed on the respective product page on custombiotech.roche.com



Immunoassay Interference Blocker

Surface Interference Blocker

| Product Name | Catalog Number | Product Information | Pack Size |
|--|----------------|---------------------|----------------|
| Bovine Serum Albumin I | 11726536103 | lyophilizate | custom fill |
| Bovine Serum Albumin (BSA), Fraction V | 10738328103 | lyophilizate | 5 kg |
| Poly BSA Type I | 11866737103 | frozen solution | 1 g, 5 g, 20 g |
| Poly BSA Type II | 11816438103 | frozen solution | 1 g, 5 g, 20 g |

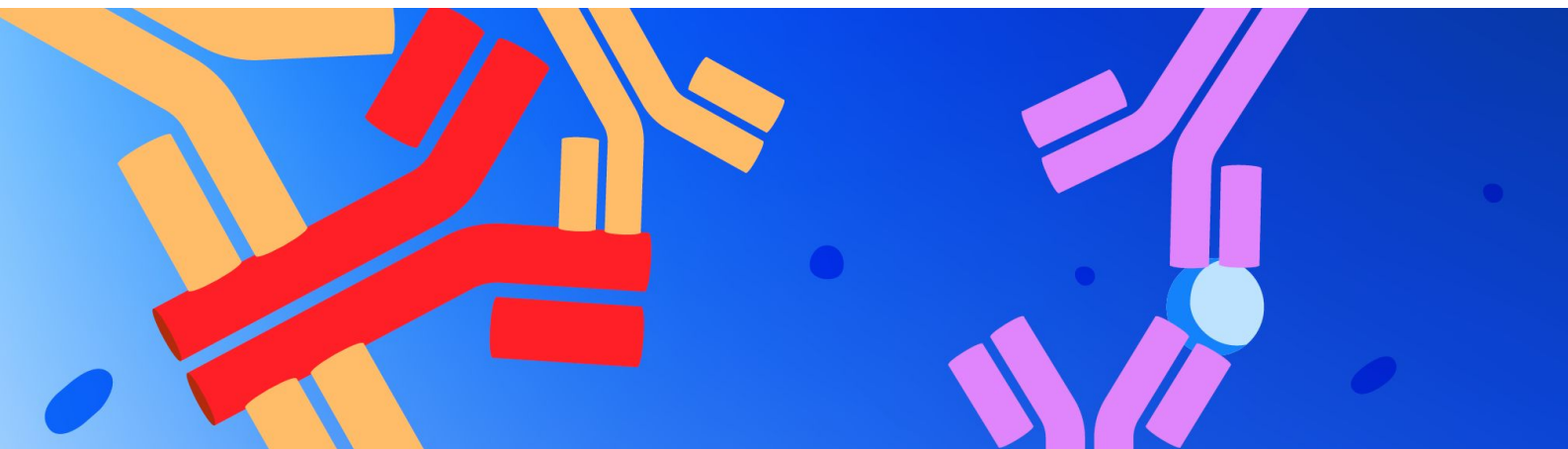
Detection Interference Blocker

| Product Name | Catalog Number | Product Information | Pack Size |
|-----------------------------------|----------------|---|---------------------------|
| Streptavidin rec. inactive, Poly | 11922122103 | frozen solution | 0.25 GAI, 2.5 GAI, 16 GAI |
| Alkaline Phosphatase Mutein, rec. | 04781007103 | from calf intestine, expressed in <i>Pichia pastoris</i> , lyophilizate | custom fill |
| β -Galactosidase Mutein | 11184024103 | from <i>E. coli</i> overproducer, lyophilizate | custom fill |



Discover more about immunology raw materials

Regulatory disclaimers are listed on the respective product page on custombiotech.roche.com





**Not finding what you are looking for?
Contact us**



**Discover more about
CustomBiotech**

Regulatory disclaimers, warranty limitations and legal notes are listed on the respective product page on custombiotech.roche.com

© 2026 Roche
All rights reserved.

**Please contact your local
CustomBiotech representative**

**Europe, Middle East, Africa, Latin
America**

mannheim.custombiotech@roche.com

United States

custombiotech.ussales@roche.com

Canada

custombiotech.can@roche.com

Asia Pacific

apac.custombiotech@roche.com