



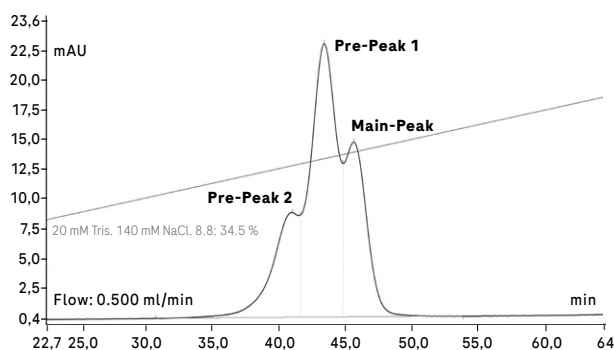
# FcRn Affinity Column Gen2

## Enhanced analysis of antibody half-life

### Function and effects of the FcRn

The neonatal Fc receptor (FcRn) is important for the metabolic fate of IgG antibodies *in vivo*. Analysis of the interaction between FcRn and IgG *in vitro* can provide insights into the structural and functional integrity of a therapeutic IgG, which can impact pharmacokinetics (PK) *in vivo*.<sup>1</sup>

An affinity chromatography column that resolves antibody species and variants based on binding affinity to FcRn is now available from Roche CustomBiotech.



Evaluation of a partially oxidized monoclonal antibody (Stracke J, et al., 2014)<sup>2</sup>

The column uses a pH gradient allowing you to easily view binding across a range of pH values, not only at pH 6.0 or pH 7.4.

The FcRn Affinity Column Gen2 accelerates and standardizes antibody half-life analysis, so you can develop a meaningful lead candidate more quickly.

### The easy-to-use FcRn Affinity Column Gen2 works on your HPLC and allows you to:

- characterize and distinguish
  - IgG variants with different Fab fragments.
  - oxidized and native IgG.
  - aggregated and monomeric IgG.
  - wild-type and engineered IgG.
  - antibody isotypes.
  - aggregates and unbound serum albumin.
- monitor antibody behavior at multiple pH values, visualizing even minor differences in antibody and its half-life.
- automate antibody processing.
- eliminate potentially inconsistent coating densities for truly standardized analyses.

### Proteins that bind to FcRn

- Human IgG1, IgG2, IgG3, IgG4
- Human albumin (often used as a fusion protein for therapeutic proteins)
- Some IgG antibodies of non-human species are able to bind human FcRn

## Specifications

### Prepacked chromatography column

with 1 mL FcRn resin

<b>Binding capacity</b>	≥ 100 µg IgG
<b>Maximal system pressure</b>	20 bar
<b>Maximal volumetric flow rate</b>	0.5 mL/min
<b>Stability</b>	stable for ≥ 100 injections, stored at +2 to +8°C

## Ordering information

Products	Pack size	Catalog Number
<b>FcRn Affinity Column Gen2</b>	1 pre-packed column	09 430 857 001
<b>FcRn IgG Control</b>	1 mL	09 494 804 001

### Regulatory Disclaimer

For use in quality control/manufacturing process only.



### Literature on CustomBiotech website

Please see the  
comprehensive list of  
publications here

© 2023  
All rights reserved.

### Published by

Roche Diagnostics GmbH  
Sandhofer Str. 116  
68305 Mannheim  
Germany

[custombiotech.roche.com](https://www.custombiotech.roche.com)

### Please contact your local CustomBiotech representative

#### Europe, Middle East, Africa, Latin America

[mannheim.custombiotech@roche.com](mailto:mannheim.custombiotech@roche.com)

#### United States

[custombiotech.ussales@roche.com](mailto:custombiotech.ussales@roche.com)

#### Canada

[custombiotech.can@roche.com](mailto:custombiotech.can@roche.com)

#### Asia Pacific

[apac.custombiotech@roche.com](mailto:apac.custombiotech@roche.com)

### Literature

<sup>1</sup> Schlothauer T. et al. (2013), Analytical FcRn affinity chromatography for functional characterization of monoclonal antibodies, *MAbs* 5:576

<sup>2</sup> tracke J. et al. (2014), A novel approach to investigate the effect of methionine oxidation on pharmacokinetic properties of therapeutic antibodies, *MAbs* 6:1229