

## Evolved to solve *KAPA2G Robust*

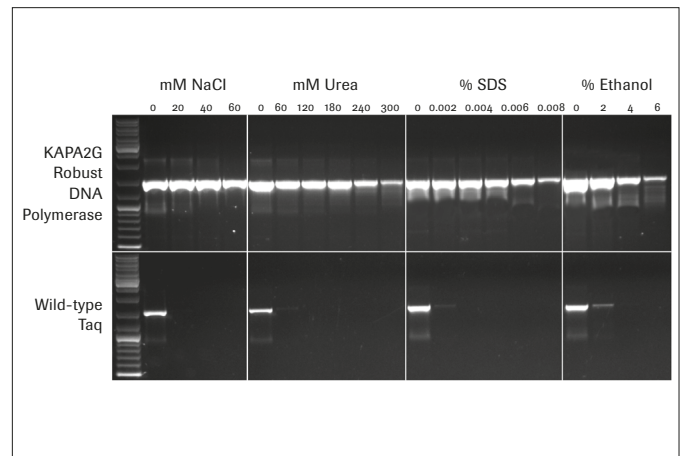
KAPA2G Robust DNA Polymerase is a second-generation (2G) enzyme evolved to solve inconsistent amplification across a broad range of amplicon types (GC- and AT-rich). This product enables higher processivity and specific activity, which translates to robust PCR performance, high sensitivity, and improved tolerance to common inhibitors. The high performance is ideally suited for challenging PCR applications and difficult samples, eliminating the need for optimization using multiple enzymes and protocols<sup>1</sup>.

### Gains from KAPA2G Robust:

- **Easily work with crude samples**  
KAPA2G Robust shows high tolerance to inhibitor carryover and crude sample PCR (e.g. FFPE)
- **Achieve high sensitivity in challenging applications**  
Obtain high yields per unit enzyme
- **Improve your PCR workflow for difficult samples**  
Work with GC- and AT-rich targets and shorten optimization time of your assays



### Improved tolerance to common PCR inhibitors

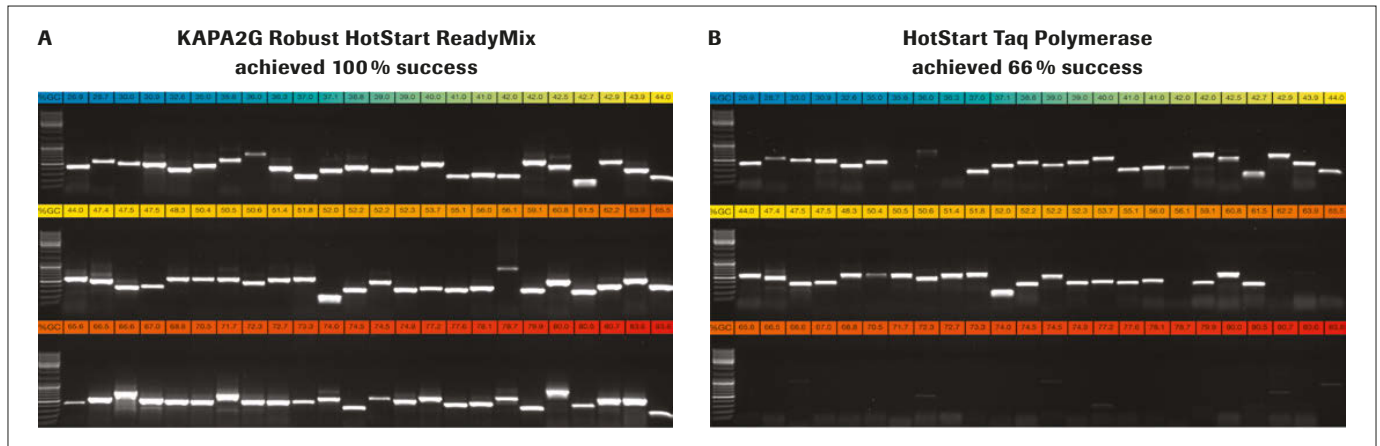


**Figure 1: Amplification of a 1.5 kb fragment from 1 pg plasmid DNA in the presence of four common PCR inhibitors using the KAPA2G Robust HotStart PCR kit and wild-type hot start Taq polymerase.**

All reactions contained 0.5 units of enzyme per 25  $\mu$ L reaction. KAPA2G Robust HotStart Buffer B was used throughout, with the addition of KAPA Enhancer 1 for reactions containing SDS. Cycling was performed with an Eppendorf Mastercycler eppgradient S, using a standard 3-step cycling profile (35 cycles) with an annealing temperature of 64°C and 1.5 min extension time per cycle for all enzymes<sup>1</sup>.

<sup>1</sup>Reference: data on file at Roche.  
For further processing only.

## Increased performance across a wide range of GC- and AT-rich targets



**Figure 2:** Half of each of the PCR products obtained with 72 of the 96 primer sets used in this study were electrophoresed in a 1% TBE-agarose gel. Amplicons were loaded in order of increasing GC content, with the lowest GC content (27%, blue) at the top left hand side and the highest GC content (84%, red) at the bottom right hand side of each composite gel image. Primers selected for this study had variable primer lengths, sequence composition, theoretical melting temperatures and other design features. Some primers contained 5'-tails for post-PCR sequencing using M13 or other standard sequencing primers. **A.** KAPA2G Robust HotStart ReadyMix reactions (25 µL) were performed as outlined in the User Guide. **B.** Wild-type Taq reactions (25 µL, containing 0.5 U Taq per reaction) were performed in Taq reaction buffer (1.5 mM MgCl<sub>2</sub> at 1X), using the same final primer and dNTP concentrations as for KAPA2G Robust. All reactions contained 25 ng human genomic DNA. 5% DMSO was included in all reactions (KAPA2G Robust and Taq) targeting amplicons with a GC content >70%<sup>1</sup>.

### Ordering information

Product	Pack size	Catalog number
KAPA2G Robust HotStart PCR Kit	5 kU	08 041 121 001
KAPA2G Robust HotStart ReadyMix	12.5 ml	08 041 113 001
Related products	Pack size	Catalog number
KAPA Express Extract	1,000 reactions	08 041 253 001

### <sup>1</sup>Reference

Data on file at Roche.

### Regulatory disclaimer

For further processing only.

[custombiotech.roche.com](http://custombiotech.roche.com)

### Please contact your local CustomBiotech representative

#### Europe, Middle East, Africa, Latin America

Phone +49 621 759 8580  
 Fax +49 621 759 6385  
[mannheim.custombiotech@roche.com](mailto:mannheim.custombiotech@roche.com)

#### United States

Phone +1 800 428 5433, ext. 14649 (toll-free)  
 Fax +1 317 521 4065  
[custombiotech.ussales@roche.com](mailto:custombiotech.ussales@roche.com)

#### Canada

Phone +1 450 686 7050  
 Fax +1 450 686 7012  
[custombiotech.can@roche.com](mailto:custombiotech.can@roche.com)

#### Japan

Phone +81 3 6634 1046  
 Fax +81 3 5479 0585  
[japan.custombiotech@roche.com](mailto:japan.custombiotech@roche.com)

#### Asia Pacific

Phone +65 6371 6638  
 Fax +65 6371 6601  
[apac.custombiotech@roche.com](mailto:apac.custombiotech@roche.com)

#### Published by

Roche Diagnostics GmbH  
 Sandhofer Straße 116  
 68305 Mannheim  
 Germany

© 2017 Roche Diagnostics GmbH  
 All rights reserved.